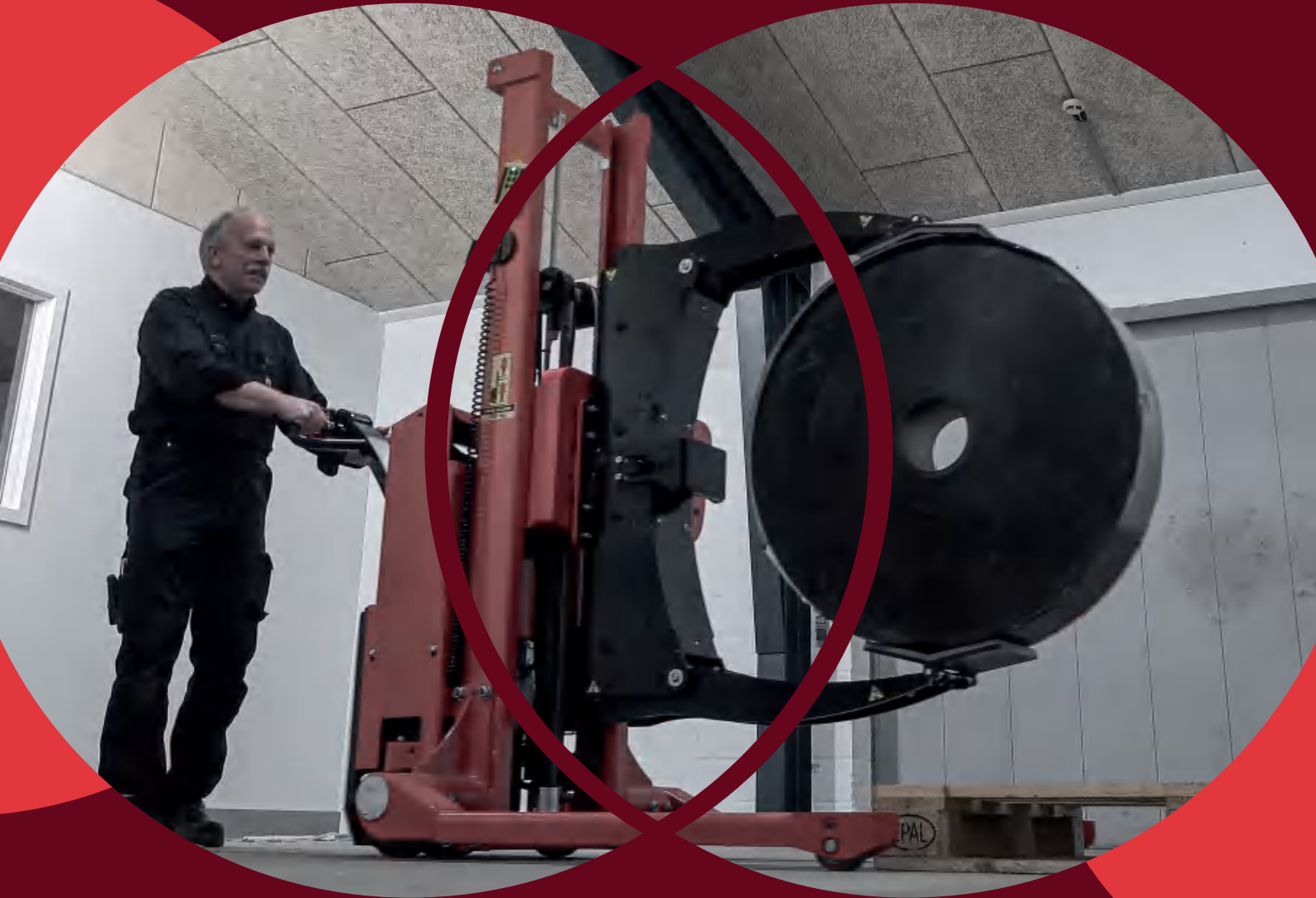




Logitrans
lifting performance



REEL ROTATOR

LFRRM/LFSRRM - ELFRRM/ELFSRRM
ELFRRE/ELFSRRE - SELFRRR/SELFSRRE



REEL ROTATOR

SAFETY FEATURES

REEL LIFTER



Reel Rotator

With the reel rotator you can lift up heavy reels from a pallet, rotate and place them in a packaging machine without physical effort.

The two main benefits of the reel rotator: Avoid manual material handling; and ensure precise and careful handling of heavy reels.

To **manually** lift and turn heavy reels is a physically straining, exhausting and very inefficient solution for handling such large objects. With the reel rotator you can boost your performance, as one operator can do the job re-

peatedly, without compromising on quality, efficiency or safety.

Working with reels requires **careful movements and precise placement**. Besides from being big and heavy, the reels are often fragile and very valuable, and must be handled carefully. The risk of dropping the reels or causing damages/scratches is high with human strength, but

with the reel rotator you ensure a high level of safety - for your reels, your employees and your surroundings.

The reel rotator is a perfect match for companies in the printing and packaging industry. And together with the reel lifter, you have the optimal solution for handling your reels.

Secured against opening by mistake

Handles reel diameters from $\text{\O}120$ mm to $\text{\O}1270$ mm

Short overall measurements



Intuitive screen to preset rotation angles and speed



Foot protectors and shielded chains



Remote control for electric clamping, lifting, lowering, and rotation



Ergonomically correct handle



Reel Rotator

With its strong and compact design, the reel rotator is the perfect solution for handling heavy reels safely and efficiently. It is very easy to operate and manoeuvre, and with it you can:

- Lift reels vertically from a pallet (the axle pointing up) and place in a machine
- Lift reels horizontally out of a machine - e.g. packing, printing or production machines

If you need to lift a reel horizontally from a pallet, you will need the reel lifter to pick up the reel first, and then grab it with the reel rotator.

The reel rotator comes in four versions: Fully powered, semi electric, semi electric w/ manual rotation or manual. All versions are available with straddle legs. For semi electric and fully powered versions, all functions – clamping, lifting and rotation - can be done by one operator from a safe distance by using the remote control.



Safety first

You can never be too careful, when it comes to handling heavy items. Both in terms of the operators, the items and the surroundings. Therefore, the reel rotator has several important safety features:

- Rubber-covered gripping pads for high friction and gentle grip on reels.
- The grippers cannot open by mistake during transportation, regardless of model and clamping method.
- When lifting reels above 80 kg, once they are clamped, the reels can only be released, when they are supported by e.g. a pallet or the floor.
- For models with electric rotation, it is not possible to rotate below lifting height of 825 mm.
- Programmable rotation degree for electric rotation.

Reel Lifter

Space - or lack of - is often a factor, when placing reels in production, printing or packaging machines. And this is where the reel lifter becomes handy.

You also need this machine if you need to place a reel from the Reel Rotator to the ground with the eye pointing to horizon.

The reel lifter is a small, compact, but very powerful tool, very suitable for placing or removing heavy reels gently in various machines where space is limited.

In addition, the forks have a flexible locking system, which allows easy switch between different sizes of reels.

With the reel lifter you avoid awkward, physical and unnecessary manual reel handling, as assistance to the reel rotator.





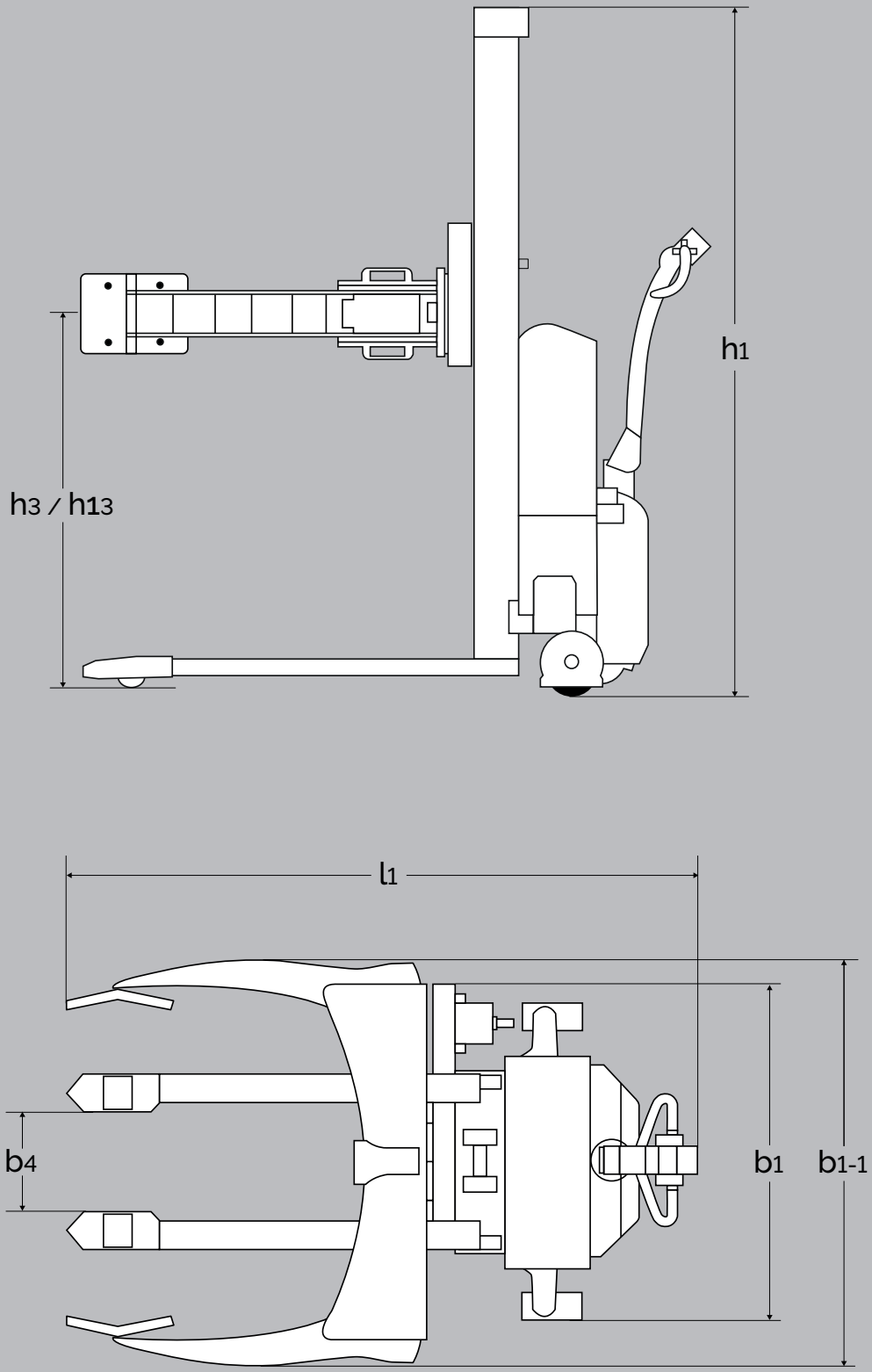
Work in practice

Although the reel rotator is constructed for the printing and packaging industry, it has also proven valuable in other material handling situations. For example, it has helped solve an ergonomic issue for the large Danish garden center, Plantorama, in handling their large and heavy clay flower pots.

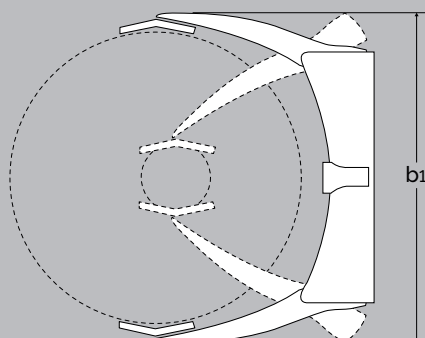
Other industries include:

- Chemical
- Labelling
- Food/protein
- Components/parts for turbines
- Food/yogurt tubs
- Printing/reels for unwinder

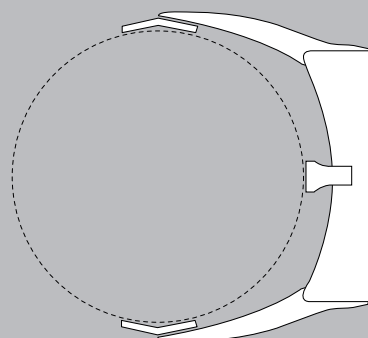
REEL ROTATOR



Can be adjusted for two-points or three points clamping



Two-points clamping



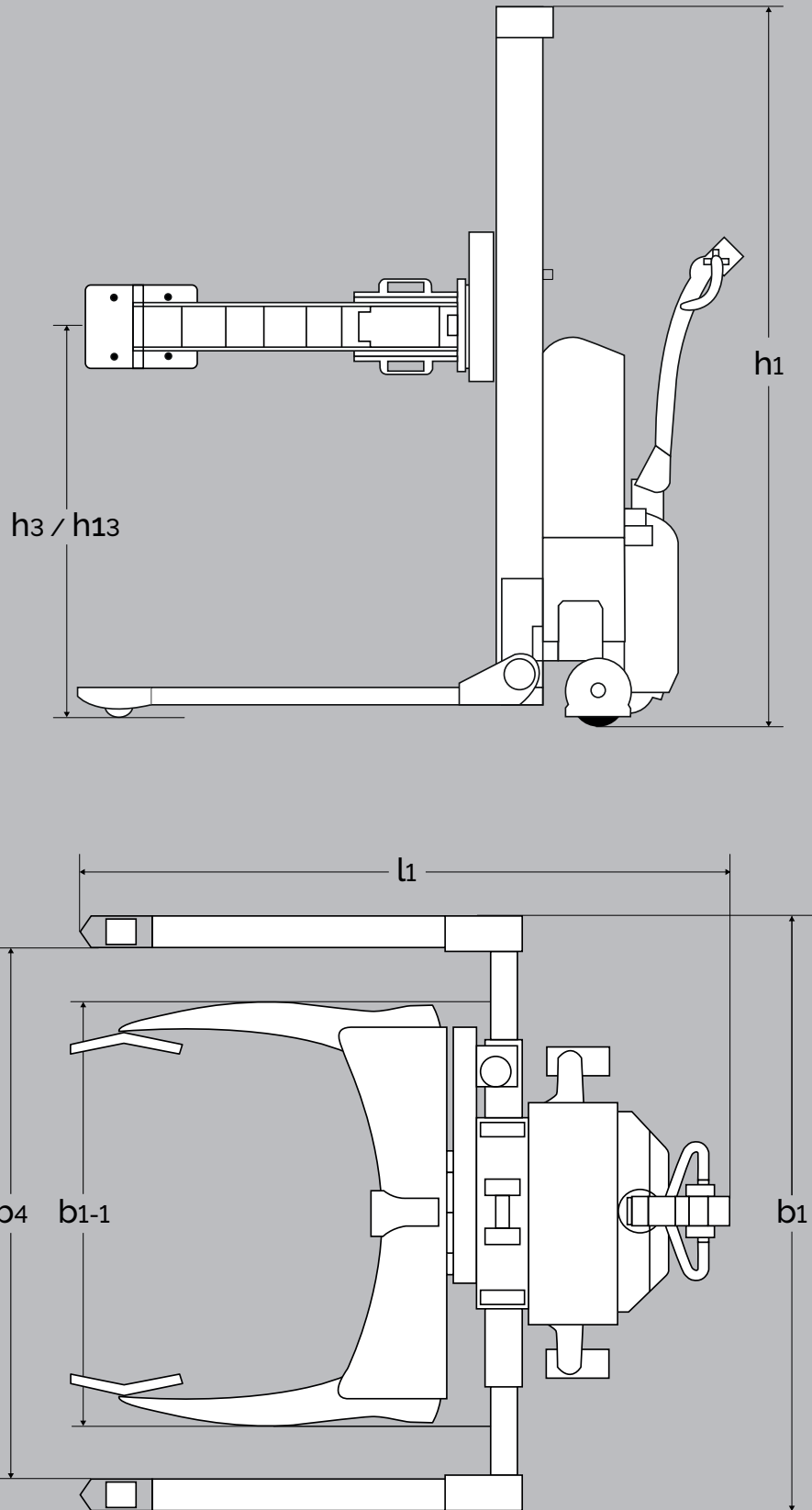
Three-points clamping

PRODUCT (measured in mm)		LFRM 1001	ELFRM 1001	ELFRE 1001	SELFRE MAXI 1003
Capacity in kg		500	500	500	500
Reel diameter		120-1270 (two-points clamping: 120-1270, three-points clamping: 800-1270)			
Opening gripping arms		Max 1300			
Lifting height	h_3	1750			
Overall height	h_1	1925			1930
Overall width	b_1	980			
Overall width gripping arms min.	b_{1-1}	1150			
Overall width gripping arms max.	b_{1-2}	1445			
Width between legs	b_4	285			
Overall length	l_1	1620	1730	1730	1795
Lowered height	l_{13}	225			
Rotation height	h_{13}	Min 825			
Gangway	A_{st}	2290*			2200*
Turning angle of wheels		210°			
Driving motor					1,2 kW 24 V**
Driving speed with/without load					Below 500 mm lift: 5/6 km/h, over 500 mm lift: 3/4 km/h
Pump motor			1,1 kW 12 V	1,1 kW 12 V	1,2 kW 24 V
Lifting speed with / without load		Normal/quick: 8/26 mm per pump	0,05 / 0,07 m/s	0,05 / 0,07 m/s	0,07 / 0,12 m/s
Lowering speed with / without load		Max 0,05 m/s - Max 0,07 m/s	0,12 / 0,04 m/s	0,12 / 0,04 m/s	0,12 / 0,07 m/s
Weight in kg (no battery)		380	410	410	480

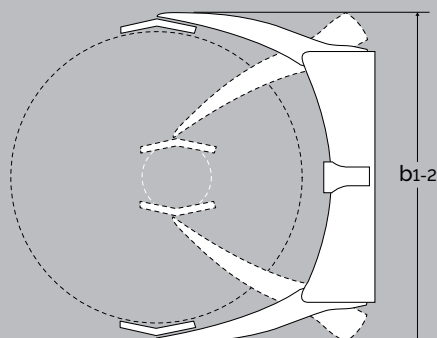
* tests show that 1700 mm are enough.

** speed control electronically variable.

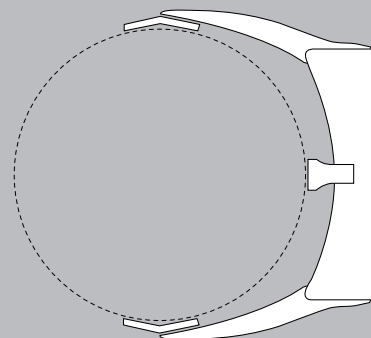
REEL ROTATOR STRADDLE



Can be adjusted for two-points or three points clamping



Two-points clamping



Three-points clamping

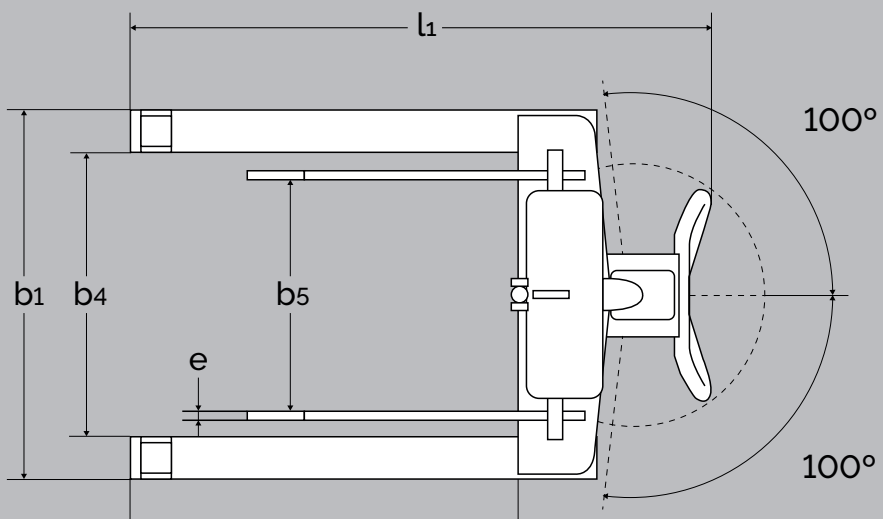
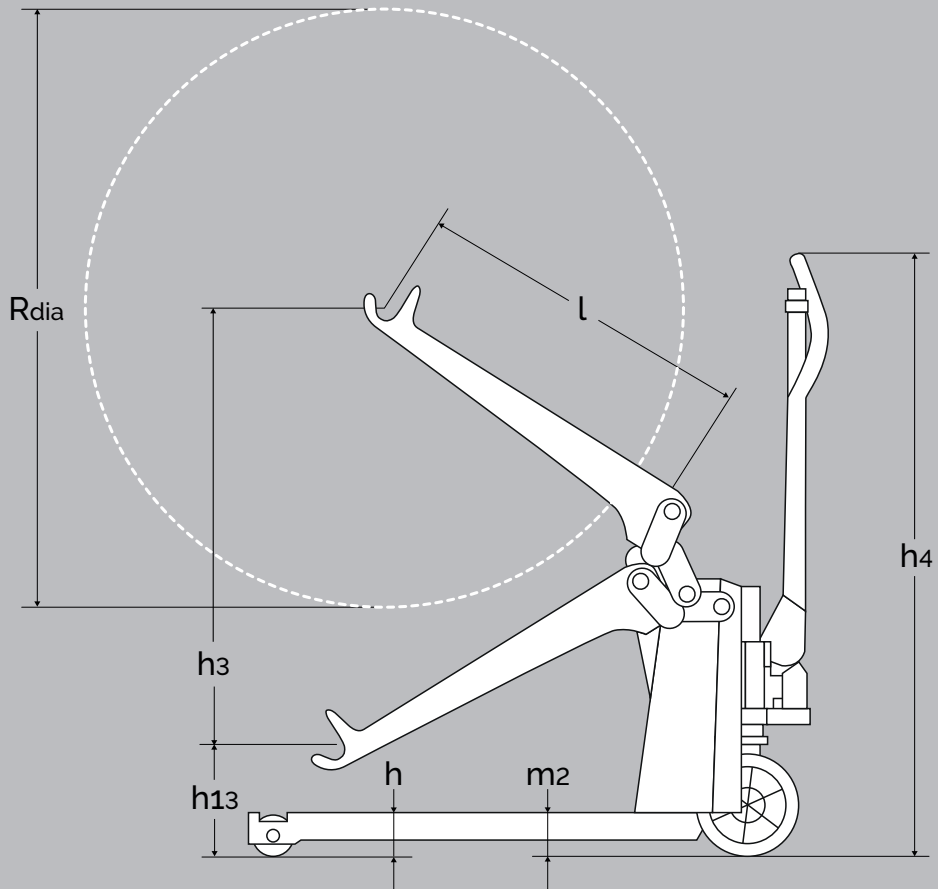
PRODUCT (measured in mm)		LFSRRM 1001	ELFSRRM 1001	ELFSRRE 1001	SELSRRE MAXI 1003
Capacity in kg		500	500	500	500
Reel diameter		120-1270 (two-points clamping: 120-1270, three-points clamping: 800-1270)			
Opening gripping arms		Max 1300			
Lifting height	h_3	1750			
Overall height	h_1	1925			1930
Overall width	b_1	166 + b_4 (min 1130 mm)			
Overall width gripping arms min.	b_{1-1}	1150			
Overall width gripping arms max.	b_{1-2}	1445			
Width between legs	b_4	850 - 942, 942 - 1124, 1124 - 1306, 1240 - 1422			
Overall length	l_1	1585	1705		1760
Lowered height	h_{13}	225			
Rotation height		Min 750			
Gangway	A_{st}	2290*			2200*
Turning angle of wheels		210°			
Driving motor					1,2 kW 24 V**
Driving speed with/without load					...
Pump motor			1,1 kW 12 V	1,1 kW 12 V	1,2 kW 24 V
Lifting speed with / without load		Normal/quick: 8/26 mm per pump	0,05 / 0,07 m/s	0,05 / 0,07 m/s	0,07 / 0,12 m/s
Lowering speed with / without load		Max 0,05 m/s - Max 0,07 m/s	0,12 / 0,04 m/s	0,12 / 0,04 m/s	0,12 / 0,07 m/s
Weight in kg (no battery)		400	430	430	480

* tests show that 1700 mm are enough.

** speed control electronically variable.

*** Below 500 mm lift: 5/6 km/h, over 500 mm lift: 3/4 km/h

REEL LIFTER



PRODUCT
(measured in mm)

RL 500

SPECIFICATIONS - REEL LIFTER

Capacity in kg		500
Reel diameter	R_{dia}	max. 1270
Reel width		max. 520
Lifting height	h_3	800
Overall height	h_4	1170
Lowered height	h_{13}	250
Lifted height	$h_{13}+h_3$	1050
Leg height	h	85
Fork span	b_5	100-520
Overall width	b_1	720
Width between legs	b_4	550
Fork width	e	15
Fork length	l	650
Run-in length	l_x	750
Overall length	l_1	1125
Ground clearance	m_2	29
Turning angle		200°
Fork wheel		Ø80x60
Steering wheel		Ø200x50
Weight in kg		92



Ergonomic Lifting Equipment

Logitrans A/S

+45 76 88 16 00

info@logitrans.com

www.logitrans.com

