



KJS WINCH **BROCHURE**





ABOUT KRC

Chengdu Karui Lifting Equipment Co., Ltd., was founded in 2011 and is a professional company engaged in the production, sales, installation, maintenance services, and supply of various accessories for various types of lifting equipment. It is one of the first companies in China dedicated to the research, development, and manufacturing of industrial grade multi scenario application winches.

Our company relies on its production base in Chengdu to form a complete system from product design and research and development, production and processing to quality control, with ISO9000 management system and IPMS intellectual property management system. And further improve the quality management system by introducing the IATF 16949 system concept.

There is currently one research and development center, five manufacturing bases, with a factory area of over 72000 square meters and more than 480 employees, including over 75 technical personnel. The company has over 100 technical patents and software copyrights.

After years of development, we have served over a thousand companies in various industries including but not limited to steel smelting, non-ferrous metal processing, automobile manufacturing, aircraft manufacturing, chemical industry, paper industry, production and manufacturing, construction industry, nuclear industry and military industry, marine engineering, entertainment performances, cultural exhibitions, etc.

Some products are exported to the United States, United Kingdom, Spain, Japan, Saudi Arabia, United Arab Emirates, Chile, Argentina, France, Italy, Russia, Zambia, Angola, Philippines, Israel, Canada, Norway, Brazil, etc.

KRC utilizes professional technical knowledge, strong design capabilities, high standard production processes, and sincere services to provide tens of thousands of equipment for various industries, which has received widespread praise from users.

CONTACT US



Visit Homepage for more
<https://krccranes.com/>

WHY CHOOSE US

- *We have developed a series of standard hoists that can meet the usage requirements of most working conditions.
- *We can provide professional non-standard design services and complete production and delivery based on customer needs and on-site conditions.
- *We can design for customers free of charge and provide overall solutions according to their needs.
- *Production can be carried out according to customer requirements and drawings to meet the various requirements of mid to high end customers.
- *Having strong electrical control design and assembly capabilities, able to meet various control requirements of customers.
- *Adopting international and domestic first-line brand matching kits to meet the requirements of customers at different levels.
- *The production process is strictly controlled to ensure quality and delivery time.
- *Provide professional technical training, installation support, and after-sales service.
- *Cooperate with various tests to ensure that the product meets the local standards of the customer.
- *Various OEM/ODM services.

R&D



Produce



QC



Contents

WHY CHOOSE US

*R & D

*Produce

*Q & C

BASIC CONFIGURATION

*Standard Configuration Info

TECHNICAL SPECIFICATIONS

*Model Type

*Parameter Table

DIMENSION

*Design drawing of winch


*Detailed Dimensional Table

ABOUT CUSTOMIZATION


*Customizable Items

*Physical Object Image

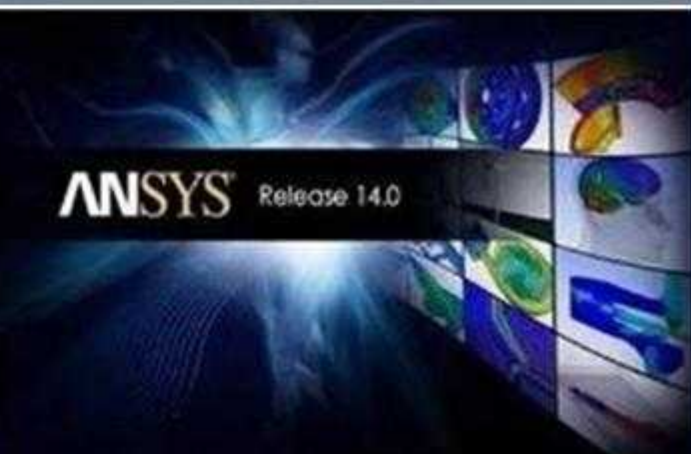
PRODUCT DEVELOPMENT PLATFORM



3D design software

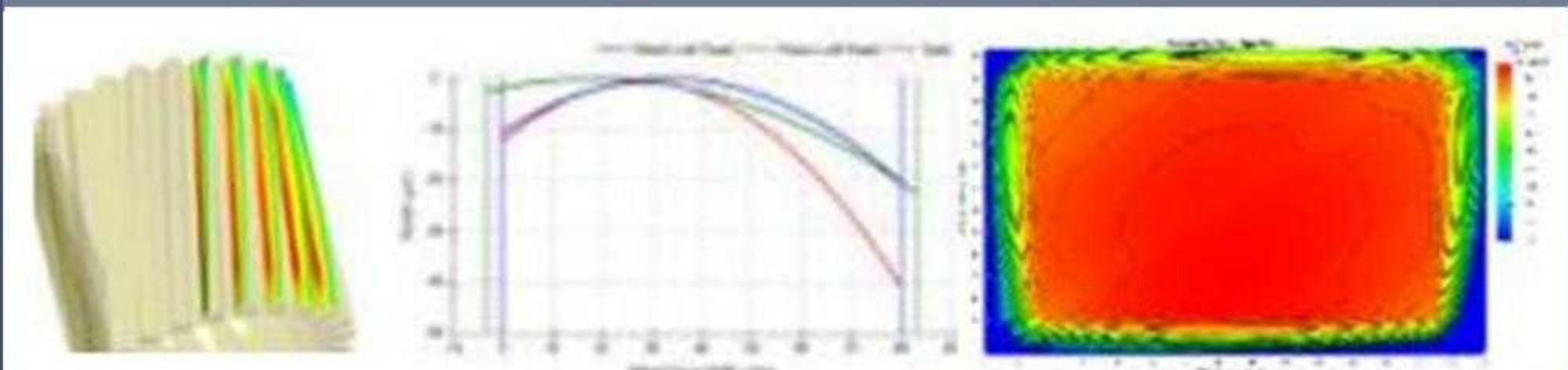


Calculation and analysis of gear strength

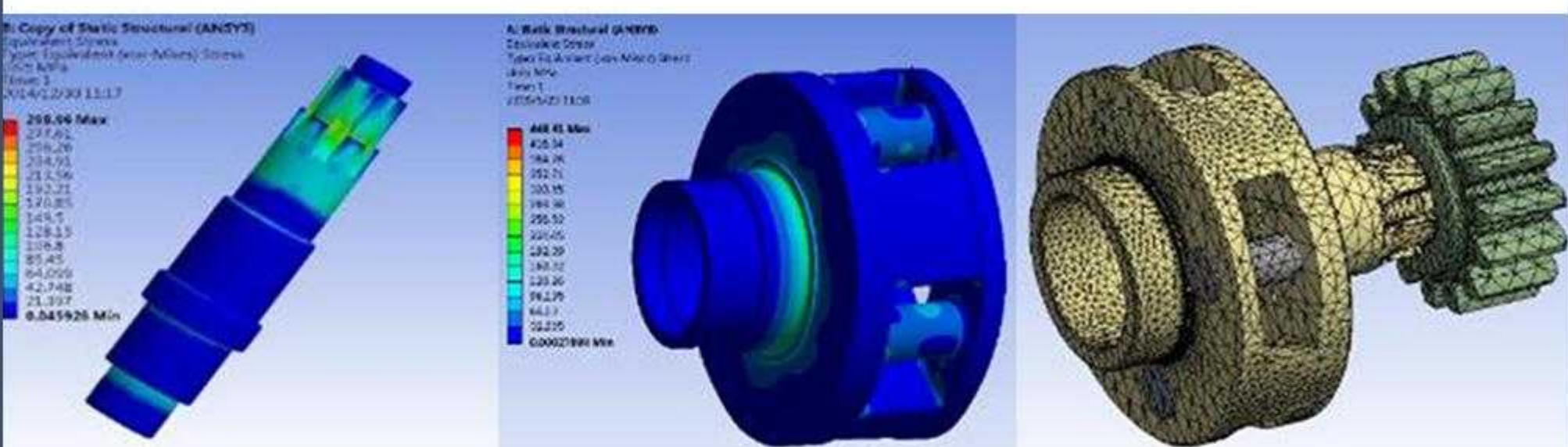


Strength calculation and analysis of structural components

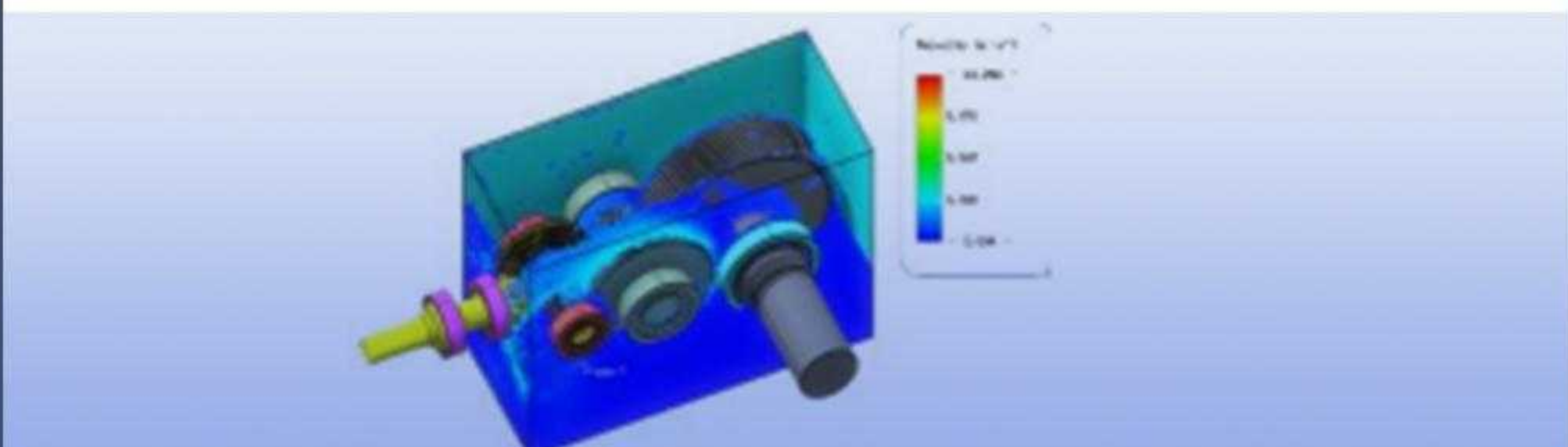
DESIGN METHOD



Optimize & Shape



Finite Element Analysis



Lubrication & Cooling

R & D ABILITY

- R&D Team
- Design Method
- Design Process

R&D Personnel: 75+



161+

Invention, utility model and design patents

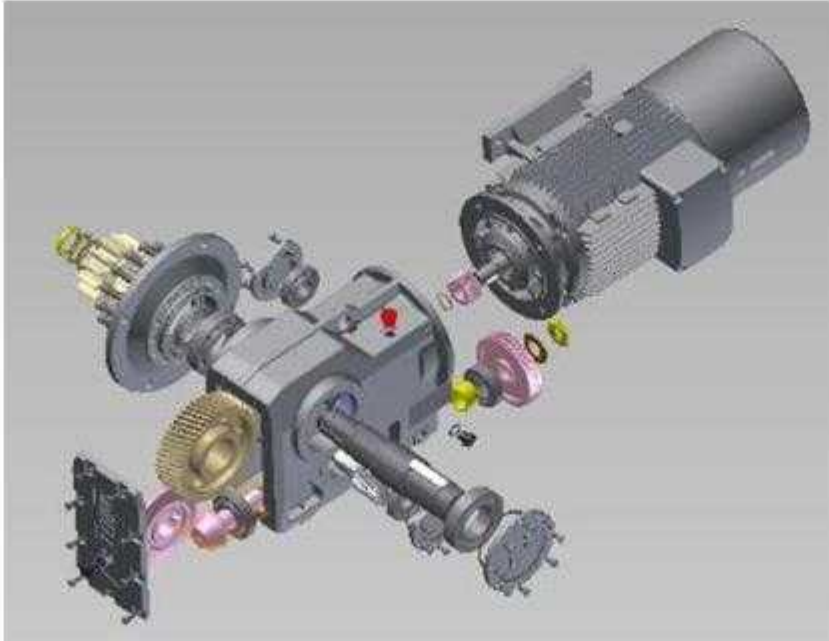
81+

The formulation of various technical and quality enterprise standards

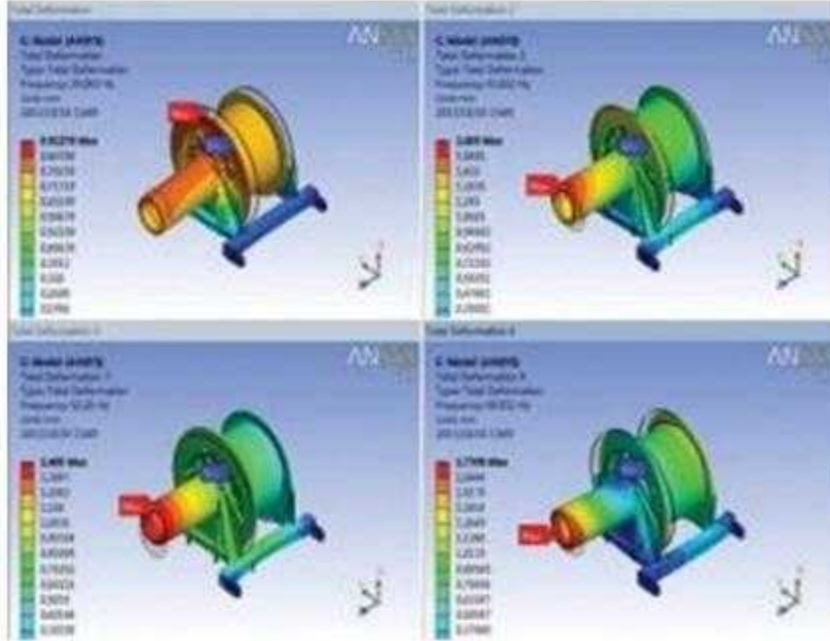
14+

Chief editor and participating editor of national, industry, local and group standards

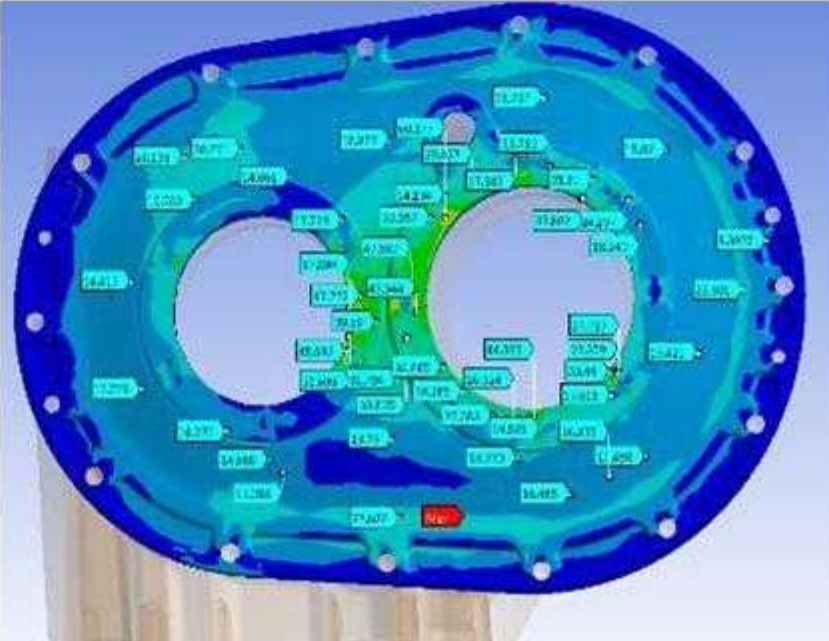
DESIGN PROCESS




Product Design



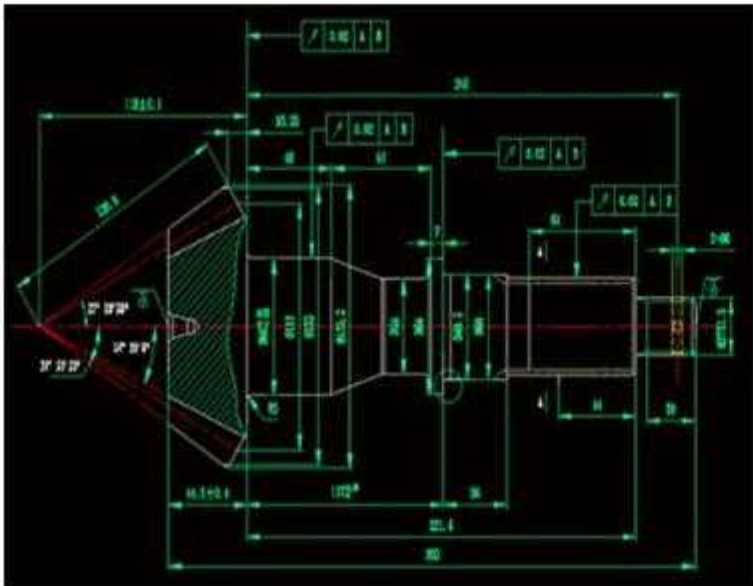
Calculation Verification



Analysis & Optimization



Process Technology



Experimental Verification

MACHINING EQUIPMENT



PRODUCING ABILITY

- Machining equipment
- Structural welding
- Drum processing
- Intelligent coating line
- Debugging and assembly

STRUCTURAL WELDING



DRUM PROCESSING



PAINTING



ASSEMBLY



QUALITY CONTROL CAPABILITY

- Production Base Management System
- Process control
- Welding Quality Management
- Testing equipment
- Overall experiment

PRODUCTION BASE MANAGEMENT SYSTEM

The production base has obtained QSHE system certification and intellectual property certificate, and has successfully passed ISO 9001 quality management system certification, ISO 14001 environmental management system certification, and ISO 45001 occupational health and safety management system certification, building a comprehensive management system.

To continuously optimize management processes, the company actively introduces the IATF 16949 system concept and further enhances its comprehensive management level.

CERTIFICATE

环境管理体系认证证书

证书编号: 0012345678901234

颁发机构: 成都久和动力科技有限责任公司

认证范围: 环境管理体系认证

有效期至: 2024年12月31日

CERTIFICATE

质量管理体系认证证书

证书编号: 0012345678901234

颁发机构: 成都久和动力科技有限责任公司

认证范围: 质量管理体系认证

有效期至: 2024年12月31日

CERTIFICATE

职业健康安全管理体系认证证书

证书编号: 0012345678901234

颁发机构: 成都久和动力科技有限责任公司

认证范围: 职业健康安全管理体系认证

有效期至: 2024年12月31日

CERTIFICATE

知识产权管理体系认证证书

证书编号: 0012345678901234

颁发机构: 成都久和动力科技有限责任公司

认证范围: 知识产权管理体系认证

有效期至: 2024年12月31日

PROCESS CONTROL

IQC (Incoming Quality Control)	WQC (Welding Quality Control)	IPQC (In-process Quality Control)	FQC (Final Quality Control)	OQC (Outgoing Quality Control)
<ul style="list-style-type: none">·Appearance inspection·Dimensional Inspection·Material certification verification	<ul style="list-style-type: none">·WPS Welding Procedure Specification·WPQR Welding Qualification Report·NDT Non destructive Testing	<ul style="list-style-type: none">·WPS Welding Procedure Specification·WPQR Welding Qualification Report·NDT Non destructive Testing	<ul style="list-style-type: none">·100% full test drive·100% inspection of critical dimensions·Painting quality inspection	<ul style="list-style-type: none">·Outbound inspection·Protective packaging·Document verification

WELDING QUALITY MANAGEMENT

MECHANICAL TESTING



Material Management

- Chemical composition
- Microstructure
- Hardenability
- Mechanical properties
- Non destructive testing

METALLOGRAPHIC MICROSCOPE



Welding Quality Management

- Homework guidebook
- Process documents
- Inspection: Check whether the sampling and inspection report items of the test block comply with the process drawings

COMPONENT CONTROL



Processing Quality Management

- Box body: dimensional and positional tolerances
- Position accuracy of bearing holes, foundation holes, etc.
- Gear shaft: gear progress, keyway symmetry, etc

ASSEMBLY DIMENSION INSPECTION



Assembly Quality Management

- Assembly Operation Manual
- Assembly process control
- Experiment: Sealed, unloaded and loaded experiments

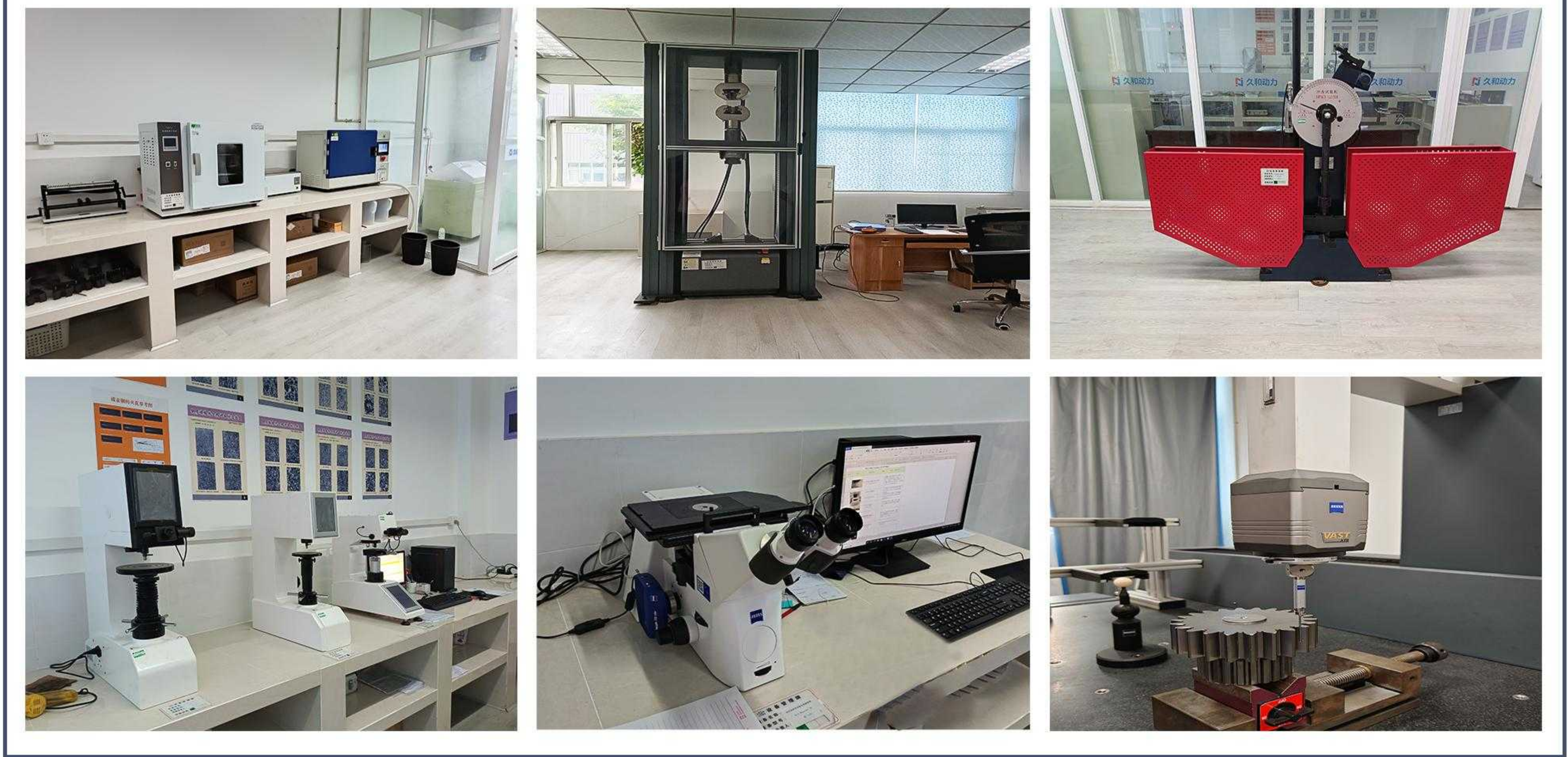
PART STEEL STAMP NUMBER, MACHINE NUMBER



Traceability Management

- Raw material traceability
- Single piece processing traceability
- Traceability of complete machine parts
- Traceability of the entire assembly process

TESTING EQUIPMENT



OVERALL EQUIPMENT



KJS Electirc Winch



BASIC CONFIGURATION



Precision

All installation surfaces are processed as a whole to ensure assembly accuracy.



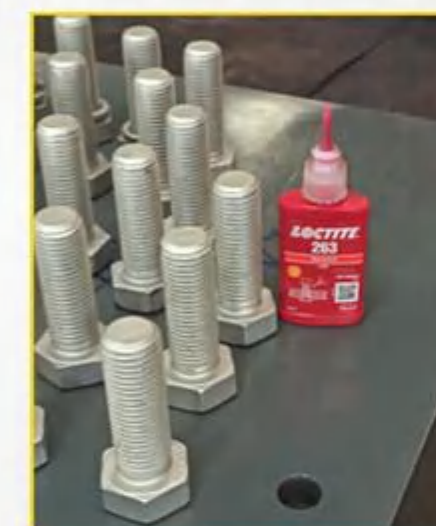
Integrated Processing of Side Panel Convex Strips

It can ensure that the winding trajectory of the steel wire rope on the drum is more accurate, reduce the risk of deviation or slippage, and the convex strip can form a physical barrier to prevent operators from accidentally contacting the drum or transmission components, while blocking external debris from entering the mechanical interior, reducing the probability of equipment failure.



Drum

1. A large drum diameter helps to wind the steel wire rope and reduces its wear and tear.
2. It has a higher level of security and security performance
3. The drum is made of Q355B steel or seamless steel pipe.



High Strength Anaerobic Thread Adhesive

All key bolts are coated with high-strength anaerobic thread adhesive to prevent loosening and leakage caused by impact and vibration.



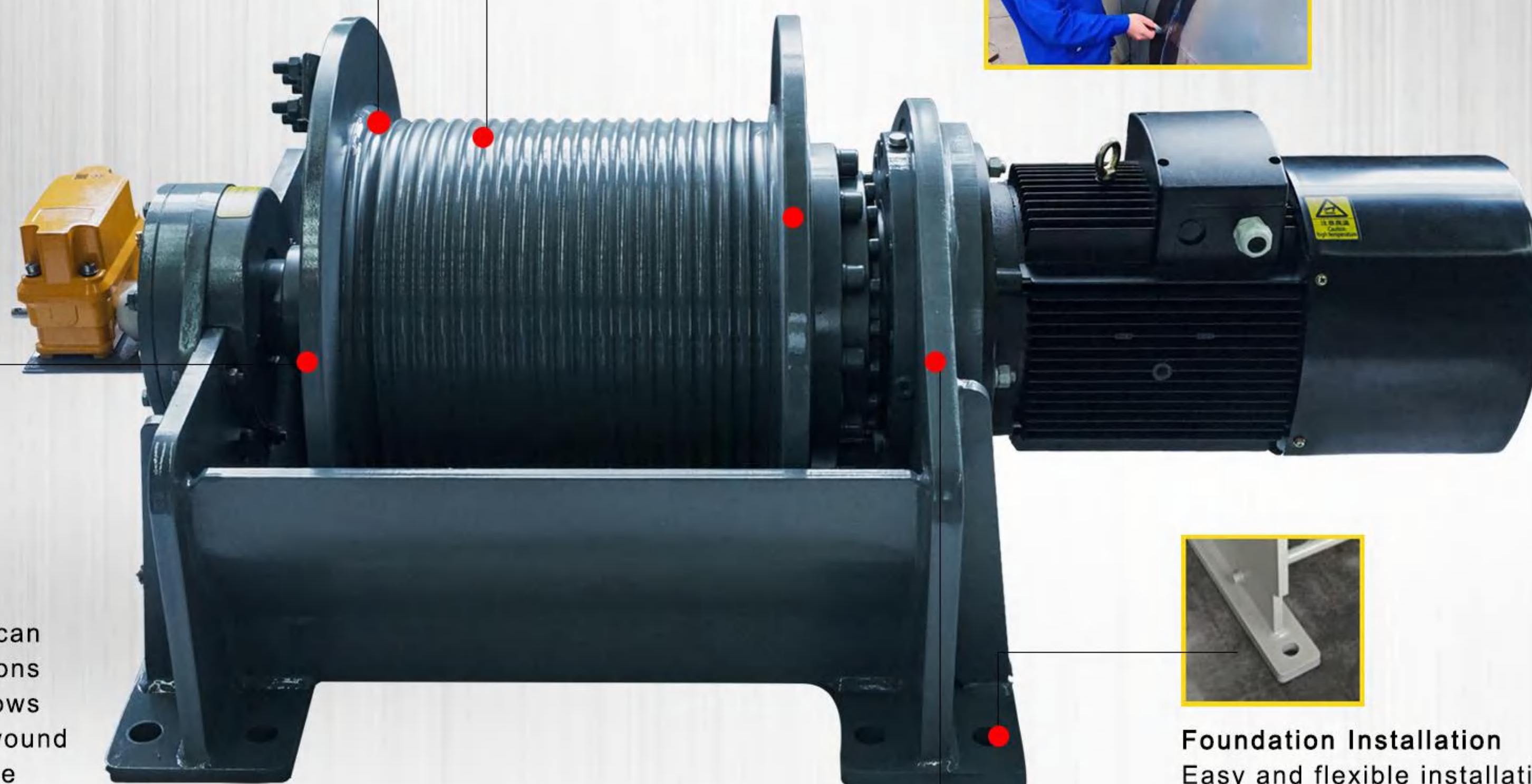
Weld Inspection

Perform non-destructive testing on all critical welds before leaving the factory to ensure product quality.



Wire rope pressure plate

The multifunctional design can adapt to various specifications of steel wire ropes, and allows the steel wire ropes to be wound from the bottom or top of the drum, making installation convenient and firmly fixed.



Foundation Installation

Easy and flexible installation, adaptable to different ground environments, and also convenient for later maintenance and adjustment.



Planetary Gearbox

Adopting a fully sealed design, it can isolate harmful pollutants. The transmission efficiency of the planetary gear reducer reaches 95% and it has a constant oil bath lubrication function



Lifting Point

All equipment is equipped with prefabricated lifting points to facilitate the transportation and installation of winches.



Motor: using YZPEJ lifting frequency conversion speed regulation three-phase asynchronous motor

1. High starting torque: The starting torque is usually 2-3 times the rated torque, and for ordinary motors it is 1.5 times.
2. Capable of withstanding short-term overload of 1.5-2.5 times the rated current, and the motor winding temperature does not exceed the limit after overload.
3. It has multiple levels including 2, 4, 6, and 8.
4. Power: 0.55-110kw.
5. Equipped with disc brakes at the rear, the maximum torque can reach 850N. m
6. The braking device can withstand frequent braking (such as 50-100 times per hour), and the brake pads are wear-resistant, heat-resistant, and have a long service life.
7. When the power is turned on normally, the brake is released. When the power is turned off, the spring pushes the brake pads to hold the brake wheel tightly, achieving instant braking when the power is turned off. The braking response time is ≤ 0.2 seconds, and the braking torque is ≥ 1.5 times the rated torque to prevent slipping.
8. Protection level: IP55
9. Balanced waterproof and dustproof capabilities



Limit Switch

1. Small size, high precision, adjustable limit
2. Strong universality and easy maintenance, installation, and adjustment
3. Protection level: IP55
4. The shell material is made of engineering plastic
5. Suitable for humid and dusty indoor and outdoor environments



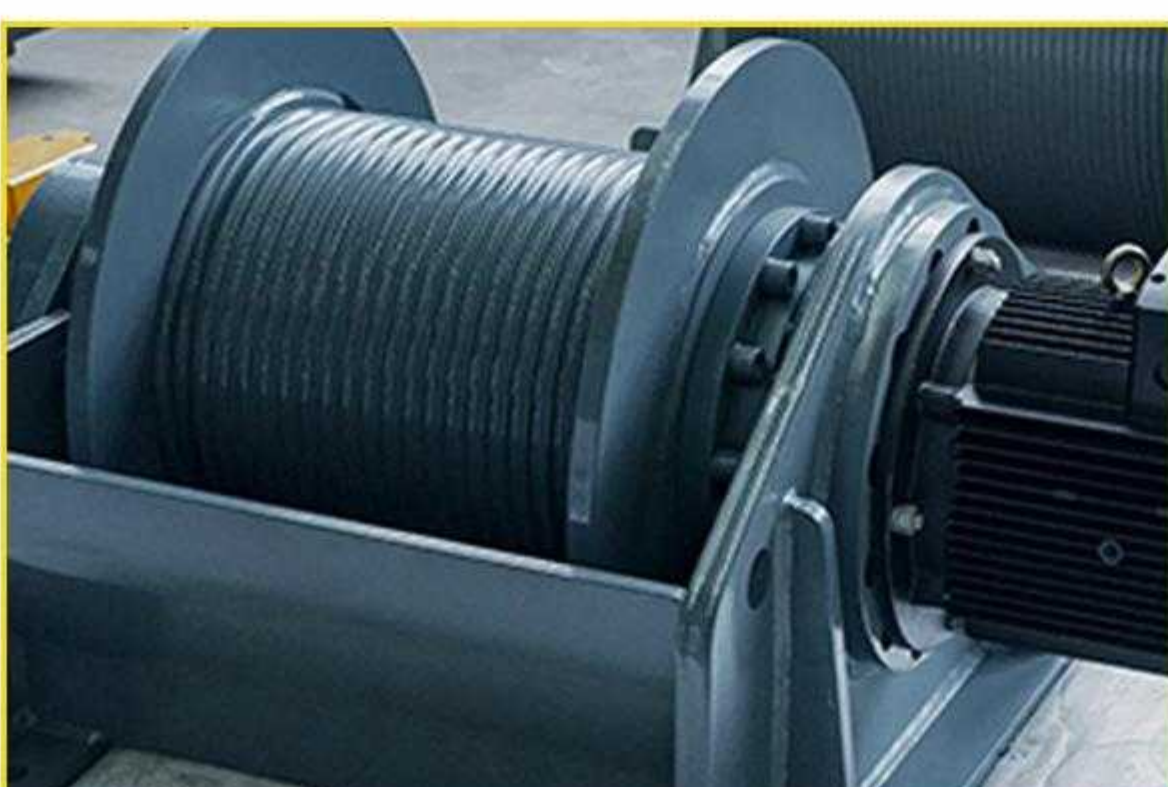
Control Box

1. Dustproof and waterproof, suitable for outdoor rain shelters or industrial scenes with high dust content
2. Protection level: IP55
3. The shell material is cold-rolled steel plate, which has good insulation properties
4. The internal components are made of flame-retardant materials, and the key internal components can withstand short-term high temperatures of 80-120°C.
5. Integrated circuit breakers, fuses, leakage protectors and other protective components
6. Low price, good protective performance, high cost-effectiveness
7. Support remote control to achieve remote start stop, parameter setting and fault diagnosis
8. Support direct control



Control Handle

1. The shell is made of PA-VI material, which is sturdy and durable
2. Working temperature: $-30^{\circ}\text{C} \sim +85^{\circ}\text{C}$
3. Receiving sensitivity: 115dBm
4. Protection level: IP55
5. Applicable environment: Indoor environments that are humid or may have a small amount of water spray



Surface Treatment Process

1. Strong adhesion, less prone to peeling or flaking
2. High hardness and wear resistance, capable of withstanding certain impacts, bending, or friction
3. Adopting environmentally friendly water-based paint, it blocks the contact between the substrate and water, oxygen, acid and alkali substances, suitable for outdoor equipment or humid environments.
4. Smooth and flat surface, without brush marks or bubbles
5. Coating thickness 80-120 μm

KJS Electirc Winch



TECHNICAL SPECIFICATIONS

K J S - 1 0 M - 8 . 5 - 3 8 0

C Basic

EX Explosion-proof

M Marine

S Standard

the First layer
tension
(KN)

Drum Length
S Short

M Medium

L Long

the First layer
speed
(m/min)

Voltage
(V)

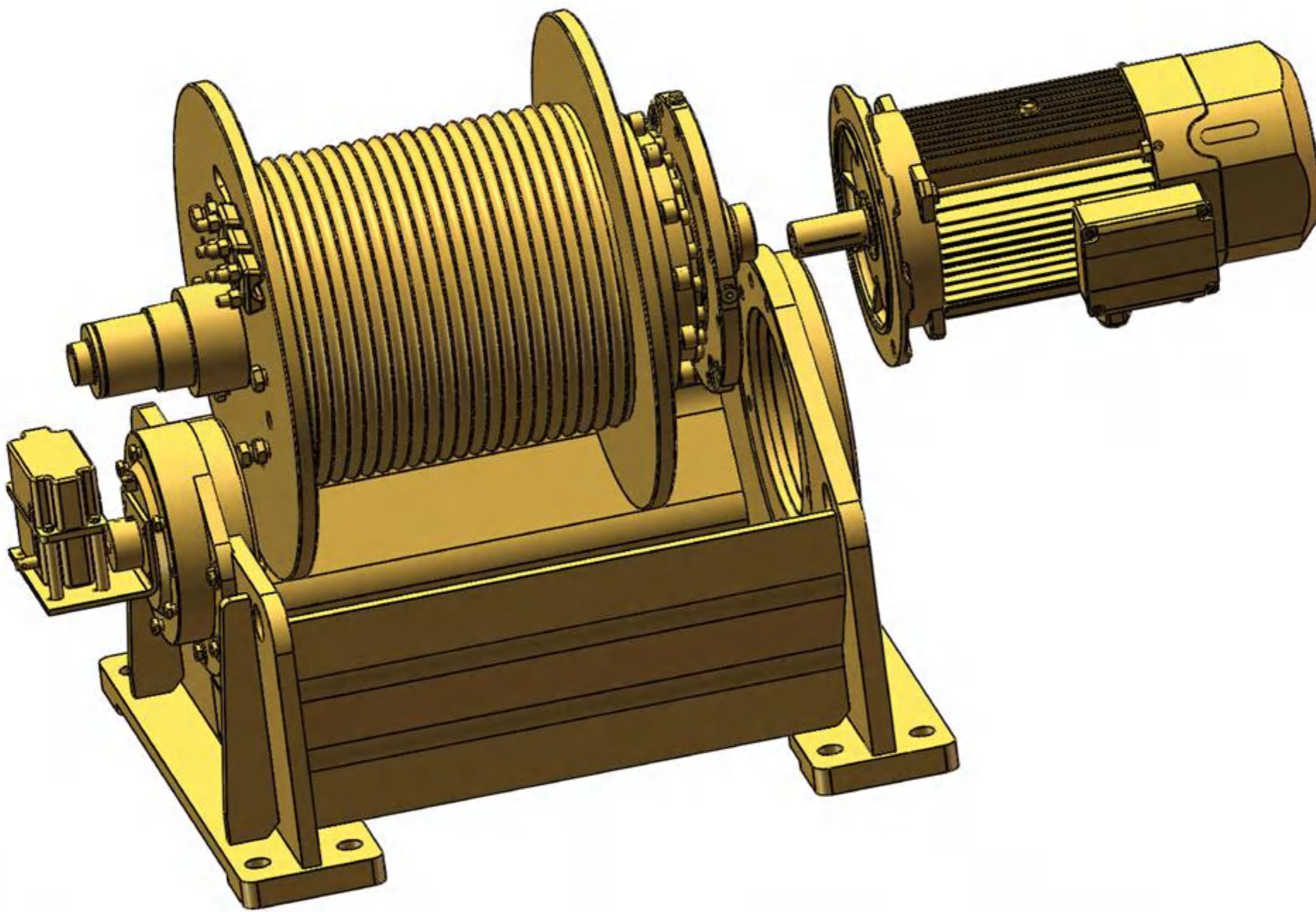


Chart 1

Model	Load (kg)			Power (kw)	Speed (mpm)			Rope Diameter (mm)	Rope Capacity (m)			Weight (kg)	Work level	Voltage
	1st Layer	2nd Layer	3rd Layer		1st Layer	2nd Layer	3rd Layer		1st Layer	2nd Layer	3rd Layer			
KJS-10S	1000	938	884	2.2	10	10.8	11.6	10	14	29	45	224	M5	380-460-3p 50Hz
KJS-10M	1000	938	884	2.2	10	10.8	11.6	10	23	48	75	231	M5	380-460-3p 50Hz
KJS-10L	1000	938	884	2.2	10	10.8	11.6	10	32	67	105	241	M5	380-460-3p 50Hz
KJS-20S	2000	1845	1712	4	10	10.8	11.6	14	13	29	45	313	M5	380-460-3p 50Hz
KJS-20M	2000	1845	1712	4	10	10.8	11.6	14	22	47	74	327	M5	380-460-3p 50Hz
KJS-20L	2000	1845	1712	4	10	10.8	11.6	14	32	68	107	345	M5	380-460-3p 50Hz
KJS-30S	3000	2758	2553	5.5	8.5	9.2	9.7	16	13	27	42	436	M5	380-460-3p 50Hz
KJS-30M	3000	2758	2553	5.5	8.5	9.2	9.7	16	23	48	76	465	M5	380-460-3p 50Hz
KJS-30L	3000	2758	2553	5.5	8.5	9.2	9.7	16	32	67	105	493	M5	380-460-3p 50Hz
KJS-50S	5000	4603	4265	7.5	7.5	8.1	8.7	22	12	25	41	665	M5	380-460-3p 50Hz
KJS-50M	5000	4603	4265	7.5	7.5	8.1	8.7	22	20	42	66	702	M5	380-460-3p 50Hz
KJS-50L	5000	4603	4265	7.5	7.5	8.1	8.7	22	30	64	102	759	M5	380-460-3p 50Hz

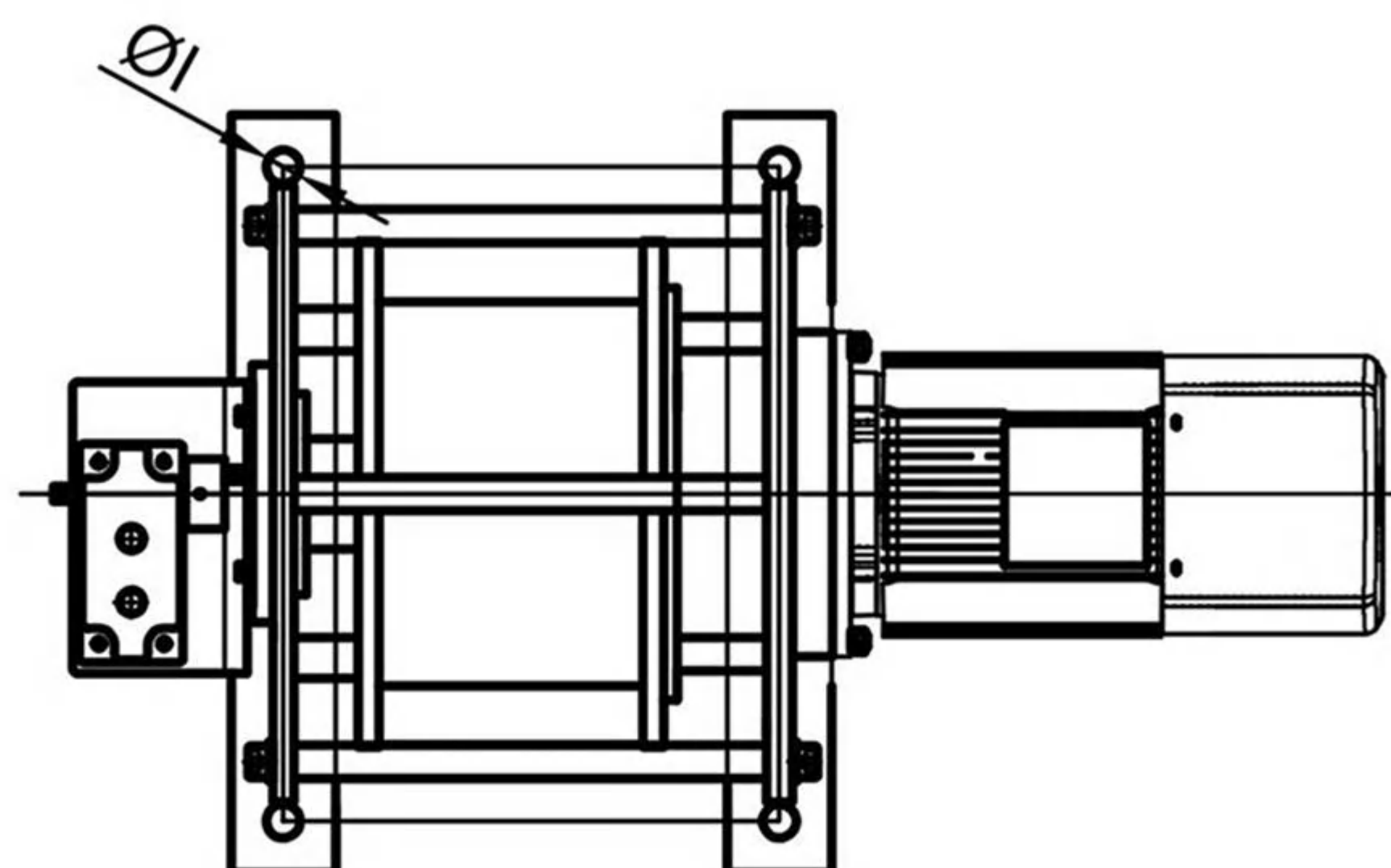
Chart 2

Model	Load (lbs)			Power (hp)	Speed (fpm)			Rope Diameter (in)	Rope Capacity (ft)			Weight (lbs)	Work level	Voltage
	1st Layer	2nd Layer	3rd Layer		1st Layer	2nd Layer	3rd Layer		1st Layer	2nd Layer	3rd Layer			
KJS-10S	2205	2068	1949	3	33	35	38	2/5	46	95	148	493	M5	380-460-3p 50Hz
KJS-10M	2205	2068	1949	3	33	35	38	2/5	75	157	246	509	M5	380-460-3p 50Hz
KJS-10L	2205	2068	1949	3	33	35	38	2/5	105	220	344	531	M5	380-460-3p 50Hz
KJS-20S	4409	4068	3774	5.5	33	35	38	9/16	43	95	148	690	M5	380-460-3p 50Hz
KJS-20M	4409	4068	3774	5.5	33	35	38	9/16	72	154	243	721	M5	380-460-3p 50Hz
KJS-20L	4409	4068	3774	5.5	33	35	38	9/16	105	223	351	760	M5	380-460-3p 50Hz
KJS-30S	6613	6080	5628	7.5	29	30	32	5/8	43	89	138	961	M5	380-460-3p 50Hz
KJS-30M	6613	6080	5628	7.5	29	30	32	5/8	75	157	249	1025	M5	380-460-3p 50Hz
KJS-30L	6613	6080	5628	7.5	29	30	32	5/8	105	220	344	1087	M5	380-460-3p 50Hz
KJS-50S	11023	10148	9403	10	25	27	29	7/8	39	82	135	1466	M5	380-460-3p 50Hz
KJS-50M	11023	10148	9403	10	25	27	29	7/8	67	138	217	1548	M5	380-460-3p 50Hz
KJS-50L	11023	10148	9403	10	25	27	29	7/8	98	210	335	1673	M5	380-460-3p 50Hz



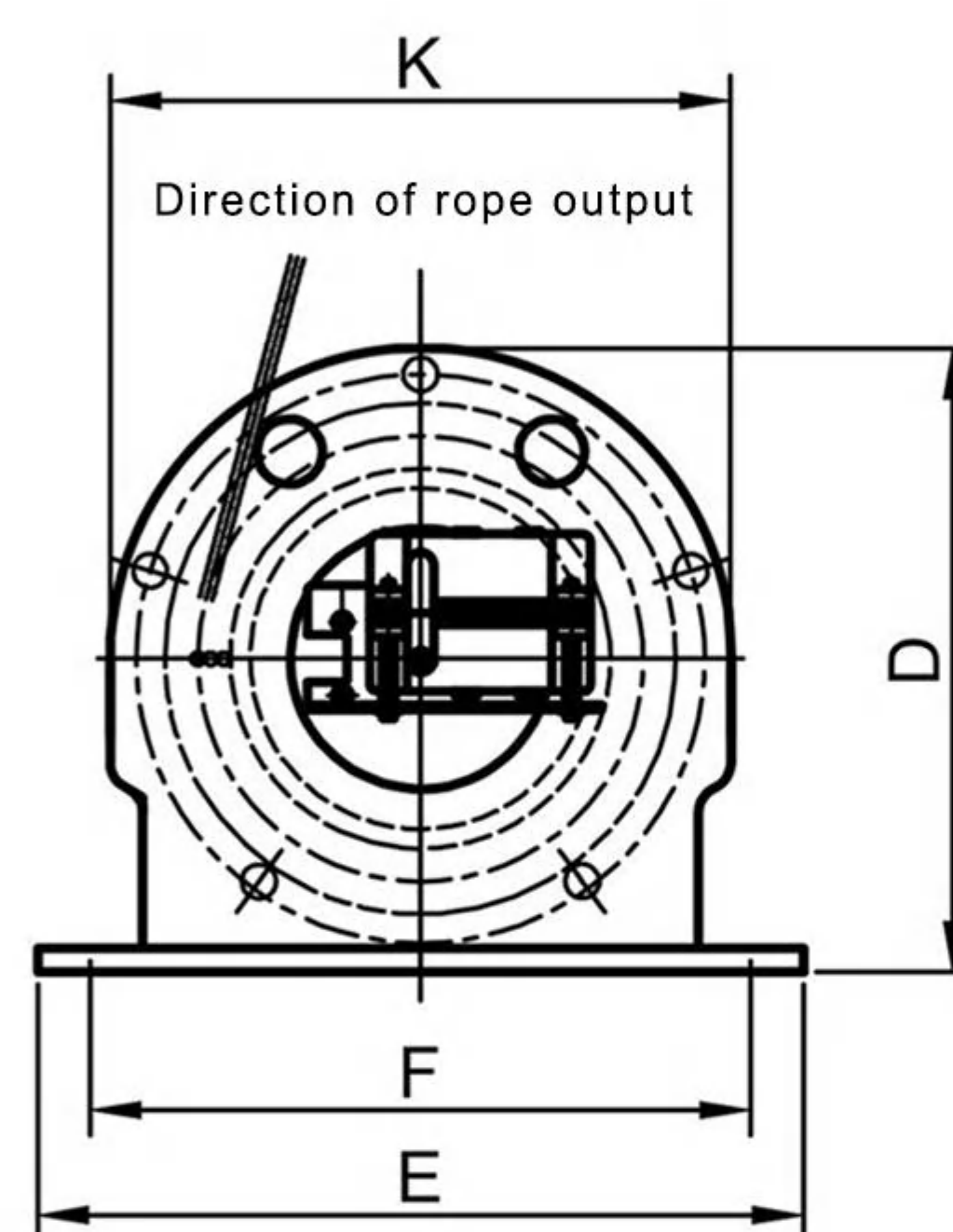
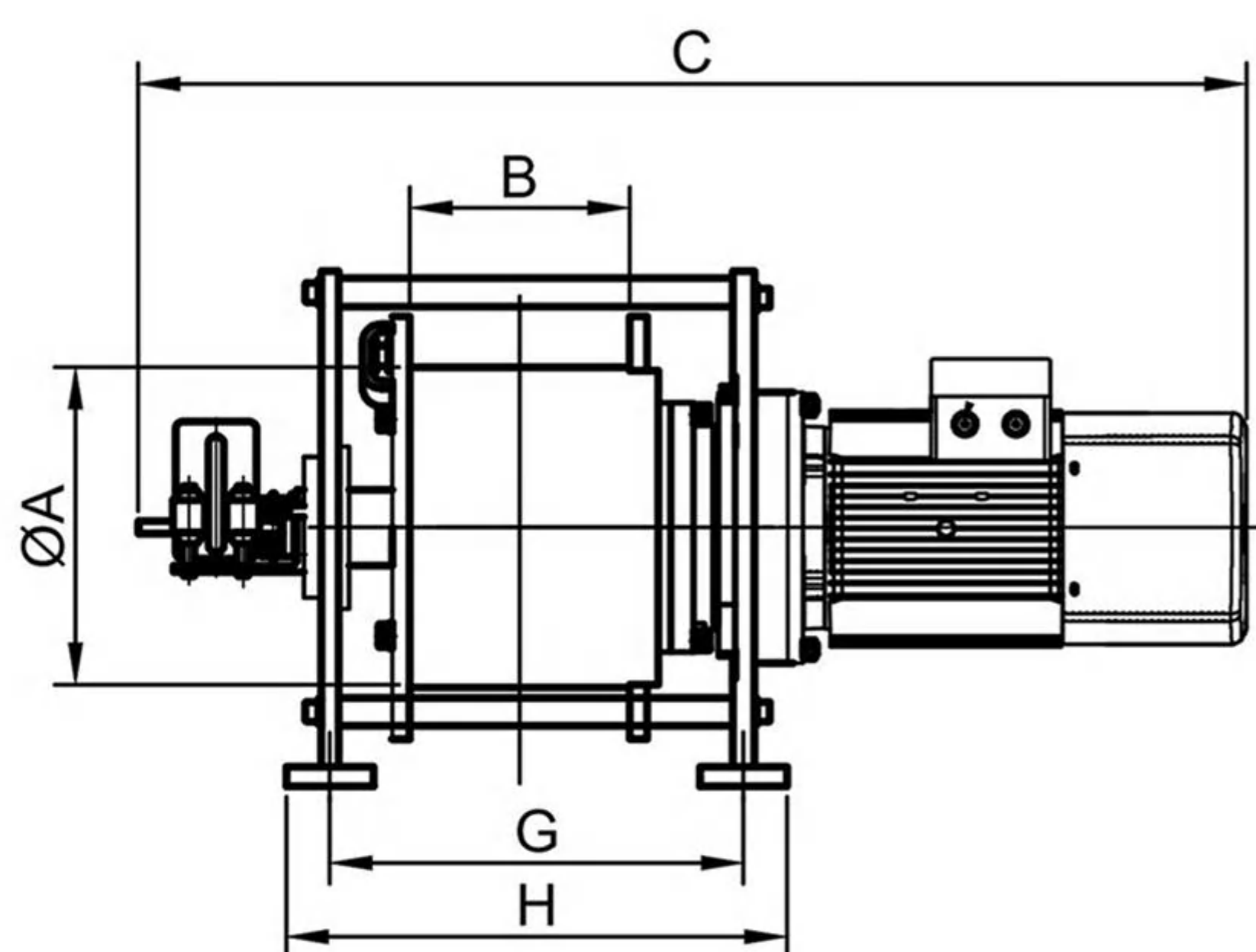
KJS Electirc Winch

DETAILED DIMENSIONS



(Reference Standard)

1. ISO 12485 "Safety requirements for lifting equipment"; GB/T 1955-2019 "Building Hoists"
2. The displacement of the high-speed shaft between the motor and the reducer shall not exceed 1mm, the radial displacement shall not exceed 0.2mm, and the angular displacement shall not exceed 0.5 °



Note: The dimensions shown are in millimeters. The size may change. Please contact the factory for certification drawings.

Model	A	B	C	D	E	F	G	H	I	K
KJS-10S	Φ 296	203	1023.5	476	584	504	382	462	Φ 26	474
KJS-10M	Φ 296	278	1098.5	476	584	504	457	537	Φ 26	474
KJS-10L	Φ 296	385	1205.5	476	584	504	564	644	Φ 26	474
KJS-20S	Φ 320	225	1066	531	682	592	412	502	Φ 33	552
KJS-20M	Φ 320	360	1201	531	682	592	547	637	Φ 33	552
KJS-20L	Φ 320	510	1351	531	682	592	697	787	Φ 33	552
KJS-30S	Φ 350	222.3	1242	560	700	600	375.3	630.3	Φ 27	680
KJS-30M	Φ 350	376.2	1396	560	700	600	529.2	784.2	Φ 27	680
KJS-30L	Φ 350	513	1533	560	700	600	666	921	Φ 27	680
KJS-50S	Φ 400	249.6	1288	628	750	650	413.6	738.6	Φ 33	728
KJS-50M	Φ 400	384	1422	628	750	650	548	898	Φ 33	728
KJS-50L	Φ 400	578.4	1616	628	750	650	742.4	1067.4	Φ 33	728

Model	A	B	C	D	E	F	G	H	I	K
KJS-10S	Φ 11.65	7.99	40.3	18.74	22.99	19.84	15.04	18.19	Φ 1.02	18.66
KJS-10M	Φ 11.65	10.94	43.25	18.74	22.99	19.84	17.99	21.14	Φ 1.02	18.66
KJS-10L	Φ 11.65	15.16	47.46	18.74	22.99	19.84	22.21	25.35	Φ 1.02	18.66
KJS-20S	Φ 12.60	8.86	41.97	20.91	26.85	23.31	16.22	19.76	Φ 1.30	21.73
KJS-20M	Φ 12.60	14.17	47.28	20.91	26.85	23.31	21.54	25.08	Φ 1.30	21.73
KJS-20L	Φ 12.60	20.08	53.19	20.91	26.85	23.31	27.44	30.98	Φ 1.30	21.73
KJS-30S	Φ 13.78	8.75	48.90	22.05	27.56	23.62	14.78	24.81	Φ 1.06	26.77
KJS-30M	Φ 13.78	14.81	54.96	22.05	27.56	23.62	20.83	30.87	Φ 1.06	26.77
KJS-30L	Φ 13.78	20.20	60.35	22.05	27.56	23.62	26.22	36.26	Φ 1.06	26.77
KJS-50S	Φ 15.75	9.83	50.71	24.72	29.53	25.59	16.28	29.08	Φ 1.30	28.66
KJS-50M	Φ 15.75	15.12	55.98	24.72	29.53	25.59	21.57	35.35	Φ 1.30	28.66
KJS-50L	Φ 15.75	22.77	63.62	24.72	29.53	25.59	29.23	42.02	Φ 1.30	28.66



KJS Electirc Winch



ABOUT CUSTOMIZATION

Options:

A: Motor (brand can be specified)

1. Dual (multi) speed motor;
2. Variable frequency motor;
3. Servo motor;

B: Brake system

1. Hydraulic braking;
2. Safety brake;
3. Manual release;

C: Rope guide

1. Reciprocating rope guide;
2. Pressure roller;
3. Rope guide;

D: Drum

1. Folded groove drum;
2. Spiral groove drum;
3. Smooth surface drum;

E: Parameter monitoring

1. Encoder;
2. Meter counter;
3. Tension sensor;

F: Rope release method

1. Double output rope;
2. Add more ropes;

Regarding to speed and rope capacity, these all can be customized according to the needs.

A



D



B



E



C



F



KJS Electirc Winch



ABOUT CUSTOMIZATION

The display types in the following image can also be customized.
Please feel free to inquire!





Contact us for more info:



Visit Homepage for more
<https://krccranes.com/>

